

Électronique EXPERT Electronic EXPERT

50
circuits

Elektronik
EXPERTE
EXPERTO EN
Electrónica

Elektronika
EXPERT
ESPERTO
Elettronico

Panou de control
multifunctional



8+

Buki
France
SCIENCES

CONTINUT:

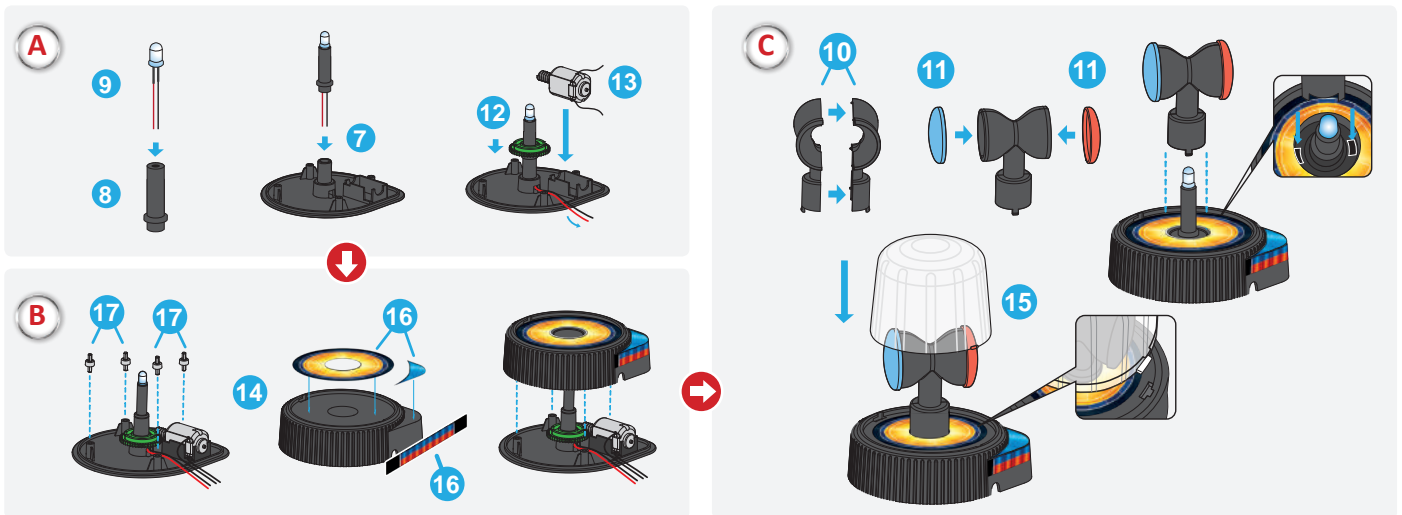


1. Placa de circuit
2. Magnet
3. Cabluri de conectare (10 cm x 8 pcs; 20 cm x 5 pcs; 30 cm x 5 pcs)
4. Brosura
5. Baza suportului pentru notite
6. Suport pentru notite
7. Baza luminii rotative
8. Suport LED
9. Bec LED
10. Axul luminii rotative
11. Capac albastru si rosu
12. Mecanism
13. Motor
14. Suportul luminii rotative
15. Capac transparent
16. Stickere
17. Element de fixare
18. Arc
19. Compartiment pentru baterii
20. Difuzor

MONTAJ:

Asamblarea trebuie să fie supravegheată și asistată de un adult.

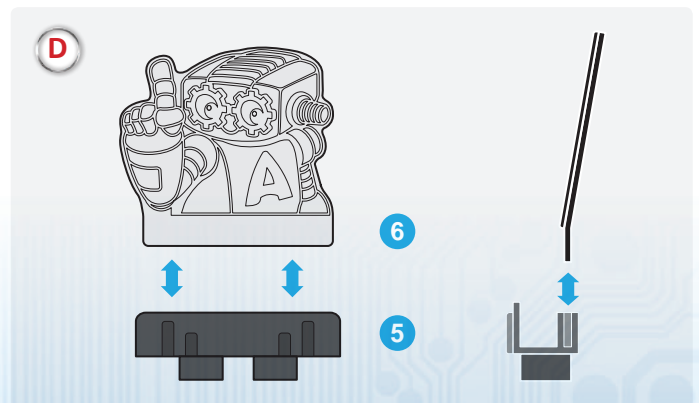
Lumina rotativa:



- Plasati LED-ul (9) in suport (8). Introduceți suportul in baza luminii rotative (7). Adăugați mecanismul (12) și așezați firele dedesubt. Adăugați motorul (13).
- Inserați cele 4 suruburi de fixare (17) in baza. Lipiți stickeretele (16) pe suportul bazei rotative (14). Fixați mecanismul de baza.
- Fixați împreună cele două părți ale axei centrale (10). Adăugați capacele colorate (11). Fixați axa de baza. Adăugați capacul transparent (15).

Suportul de notite

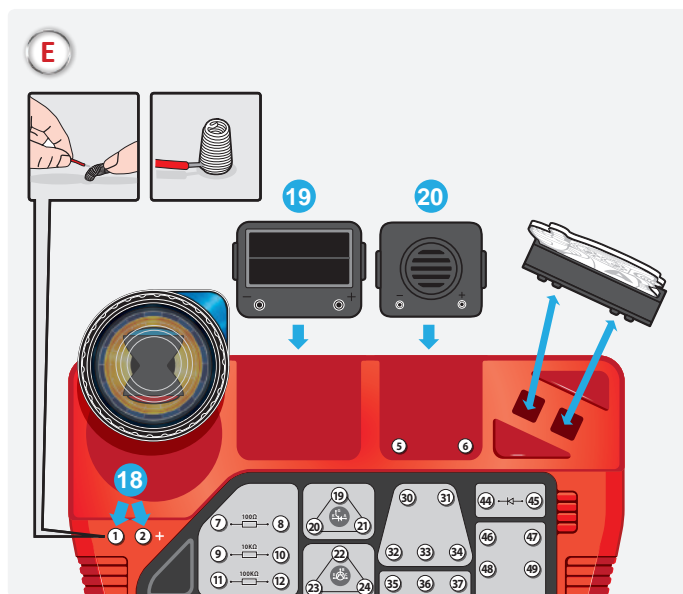
- Fixați suportul (6) de baza (5)



MONTAJ:

Panoul de control

E. Conectati lumina rotativa si cele doua arcuri (18) la pozitia 1 si 2. Conectati cele doua fire rosi la arcul 1 iar cele doua fire negre la arcul 2. Fixati compartimentul pentru baterii (19), difuzorul si suportul de notite (20).



COMPONENTE:

Cablu



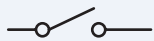
Acesta transmite curentul electric intre componente.

Sursa de curent



In acest caz, simbolul reprezinta o baterie.

Intrerupator



Acesta deschide si inchide circuitul.

Buton on/off



Apasand butonul partile de metal intra in contact facand posibila circularea curentului.

Intrerupator magnetic



Magnetul face posibila conectarea celor doua parti metalice.

Rezistor



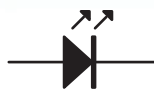
Acesta este un obstacol care reduce curentul electric si protejeaza tranzistori.

Diodă



Aceasta permite curentului electric sa circule intr-o singura directie. Curentul nu poate circula in directia opusa.

LED - diodă emițătoare de lumină)



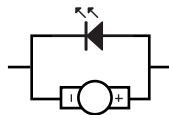
Aceasta functioneaza ca o dioda care produce in acelasi timp si lumina.

Tiristor



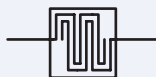
Acesta are doua terminale, ca o dioda, si un al treilea terminal, ca o poarta care controleaza circuitul curentului.

Lumina rotativa



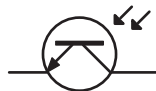
Acesta este motorul care roteste LED-ul pe masura ce curentul trece prin el.

Intrerupator tactil



Aceasta placuta consta in doua circuite separate. Cand o atingeti cu degetul cele doua circuite intra in contact si permite trecerea curentului.

Senzor de lumina



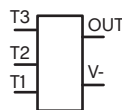
Acest senzor este sensibil la lumina si permite curentului sa circule cand este iluminat.

Difuzor



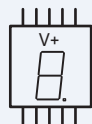
Acest component transforma curentul electric in sunet.

Unitate audio



Acest component modifica sunetele facand-ule sa sune ca zgomote de animale.

Ecran digital



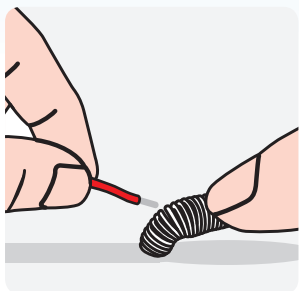
Acest ecran consta in mai multe LED-uri grupate pe segmente care afiseaza litere si numere.

Tranzistori



Aceste componente amplifica curentul in circuit. Tranzistorii sunt componente cheie in dispozitivele electrice. Un microprocesor contine peste un miliard de tranzistori.

INSTRUCTIUNI DE JOC:

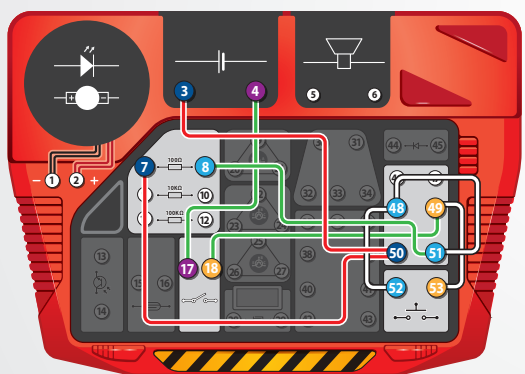
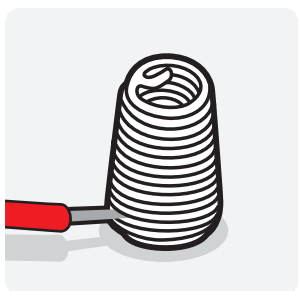


Intotdeauna puneti intrerupatorul in modul "oprit" inainte de a asambla circuitul.

Incercati sa conectati un cablu: intindeti arcul de la margine, introduceti partea expusa a cablului si lasati arcul sa revina la normal.

Cele doua parti metalice (cablul si arcul) trebuie sa fie in contact.

Poti folosi orice cablu colorat pentru a conecta componentele. Sunt toate la fel, doar lungimea este diferita.



Acest simbol indica conectarea cablurilor.



Acest simbol indica cele mai interesante proiecte.



4-17, 18-49-53, 52-48-51-8, 7-50-3

Pentru ca unitatea sa functioneze, componentele trebuie sa fie conectate. In exemplul de mai sus trebuie mai intai sa conectati un cablu intre arcul 4 si 17. Al doilea pas este sa conectati cu un cablu arcul 18 si 49, iar cu alt cablu arcul 49 si 53. Continuati pana cand circuitul este complet.

Puteti copia tipul conectarii pe o foaie de hartie si sa o prindeti de suportul de notite, pentru a vi-l putea aminti.

Fiecare experiment ilustreaza conectarile ce trebuie facute si schema de conexiuni.

Daca circuitul nu functioneaza, verificati cablurile si conexiunile cu arcurile.

INSTRUCTIUNI PENTRU PARINTI:

Acest set este conceput pentru copii cu varsta de peste 8 ani.
Necesita 2 baterii LR06-AA. Nu sunt incluse.

Bateriile trebuie schimbate de catre un adult.

Consultati diagrama pentru a vedea cum trebuie schimbate bateriile.

Bateriile ne-reincarcabile nu trebuie incarcate.

Bateriile reincarcabile trebuie scoase din jucarie inainte de a fi incarcate. Se recomanda ca acestea sa fie incarcate sub supervizarea unui adult.

Nu combinati baterii alkaline cu baterii standard (carbon-zinc), sau baterii reincarcabile (nichel-cadmiu). Nu combinati baterii utilizate cu baterii noi. Doar tipul de baterii recomandate sau similare ar trebui folosite.

Bateriile trebuie introduse folosind polaritatea corecta (consultati diagrama).

Scoateti bateriile din jucarie cand le pastrati pentru o perioada mai mare de timp, sau cand bateriile sunt descarcate.

Bornele nu trebuie scurtcircuitate.

ATENTIE:

Inainte de fiecare experiment, verificati conexiunile - o conexiune defectuoasa poate deteriora celelalte componente.

Cand experimentul este terminat scoateti bateriile si setati intrerupatorul in modul "oprit". Deconectati toate cablurile.

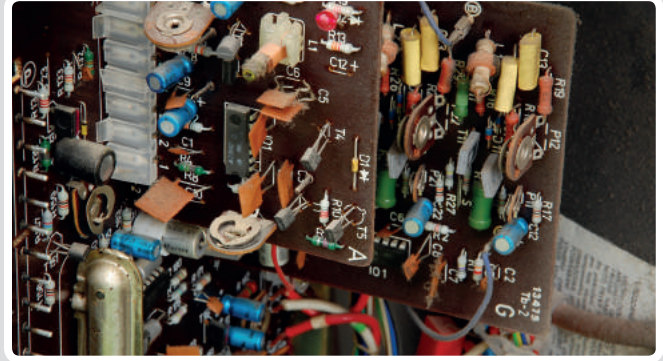
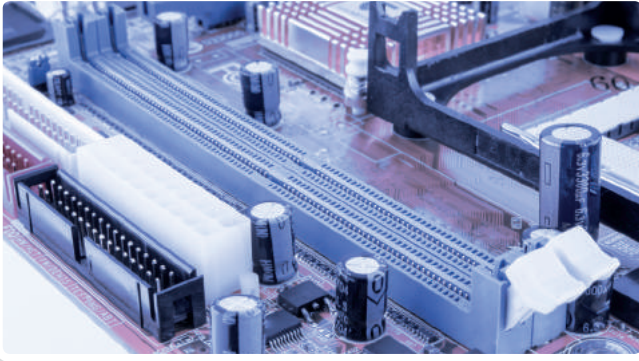
Nu conectati alte componente, in afara de cele incluse in set.

Nu blocati/acoperiti motorul, intrucat se poate supraincalzi.

Aceasta jucarie nu trebuie conectata la alta sursa de curent, in afara de compartimentul de baterii inclus in set.

Atentie: nu utilizati jucaria in apropierea urechilor.

ELECTRONICA DIN VIATA DE ZI CU ZI:



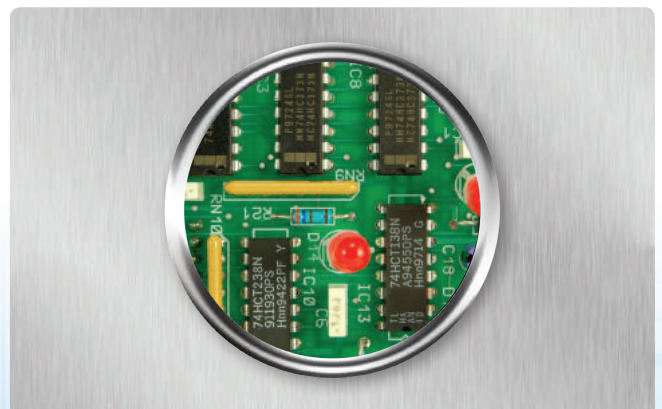
Dispozitivele electronice au devenit o parte esentiala din viata noastra de zi cu zi. Telefoane, televizoare, calculatoare... Toate aceste dispozitive sunt pline de componente electronice minuscule.

Si totusi componentele pe care le gasiti in acest set sunt in folosinta de aproximativ 50 ani. Tranzistorii si rezistentele au revolutionat industria si viata cotidiana a oamenilor de pretutindeni.

In primul rand, electronica inseamna a intelege cum circula curentul electric intrun circuit. Curentul transporta energie. dar si informatii. Felul in care acesta informatie este directionata, permite componentelor sa comunice intre ele.

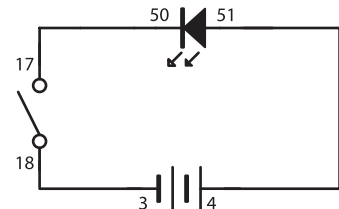
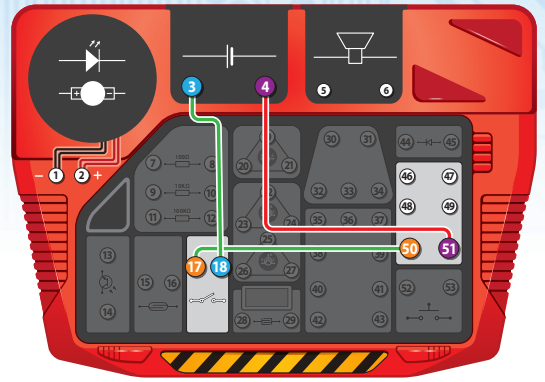
Inainte, calculatoarele erau voluminoase, complexe si limitate in functiile de calcul de baza. Dupa revolutia electronica, functiile de calcul s-au imbunatatit permitand calculatoarelor sa proceseze mult mai multe calcule si informatii.

Cu acest set, veti invata cum curentul electric circula in interiorul circuitelor printate. Veti vedea cum rezistentele si tranzistori lucreaza impreuna permitand dispozitivelor electronice sa functioneze intr-un mod extraordinar.

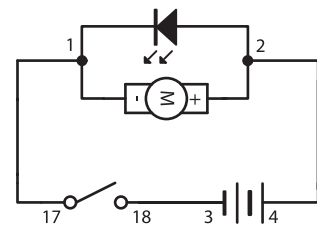
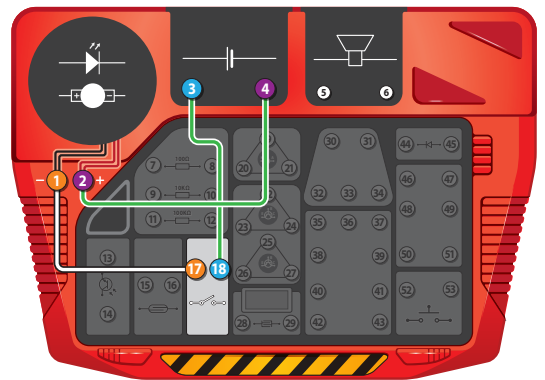


1**Circuitul simplu****4-51, 50-17, 18-3**

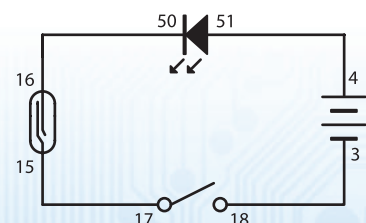
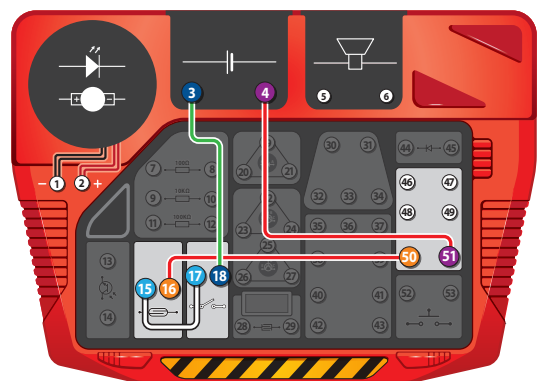
Realizati conexiunile indicate. Puneti intrerupatorul in modul "pornit". LED-ul se va aprinde. Puteti conecta si alt LED - doar conectati cablurile la alte arcuri, respectand directia.

**2****Lumina rotativa****4-2, 1-17, 18-3**

Realizati conexiunile si puneti intrerupatorul in modul "pornit". Lumina rotativa va porni si lumina.

**3****Intrerupatorul magnetic****4-51, 50-16, 15-17, 18-3**

Realizati conexiunile si puneti intrerupatorul in modul "pornit". Positionati magnetul peste intrerupatorul magnetic. LED-ul se va aprinde.



4

Rezistori

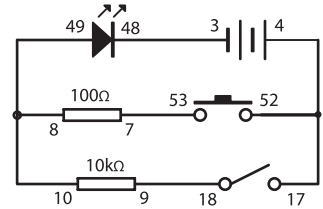
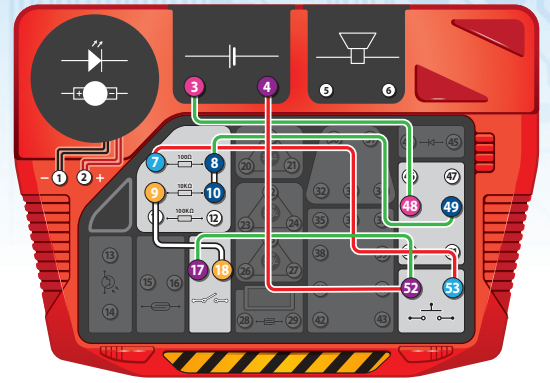


4-52-17, 18-9, 7-53, 10-8-49, 48-3

Realizati conexiunile si puneti intrerupatorul in modul "pornit".

LED-urile se vor aprinde slab. Puneti intrerupatorul in modul "oprit". Acum apasati cel de-al doilea intrerupator. LED-urile se aprind mai puternic. Curentul nu traverseaza acelasi circuit pana la LED.

Cel de-al doilea circuit are un rezistor mai slab, astfel curentul electric ce ajunge la LED are o intensitate mai mare iar lumina este mai puternica.



5

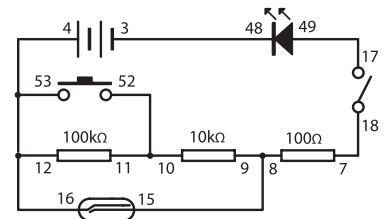
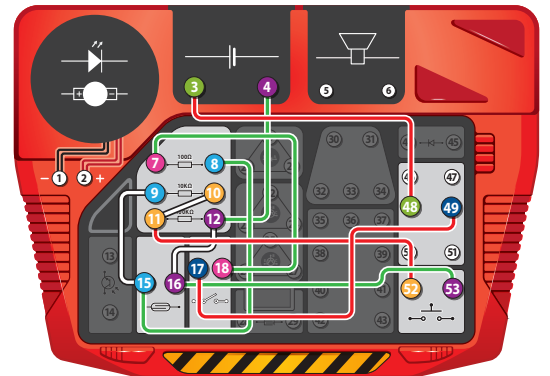
Rezistori in serie



4-12-16-53, 52-11-10, 9-15-8, 7-18, 17-49, 48-3

Realizati conexiunile si puneti intrerupatorul in modul "pornit". Curentul trece prin trei rezistori iar LED-ul se aprinde, dar slab. Apasati cel de-al doilea intrerupator: curentul trece acum numai prin doi rezistori iar LED-ul este putin mai luminos. Iar acum cu ajutorul magnetului activati intrerupatorul magnetic. Curentul trece acum numai printr-un singur rezistor, iar LED-ul este si mai luminos.

Un rezistor este un obstacol pentru curentul electric.



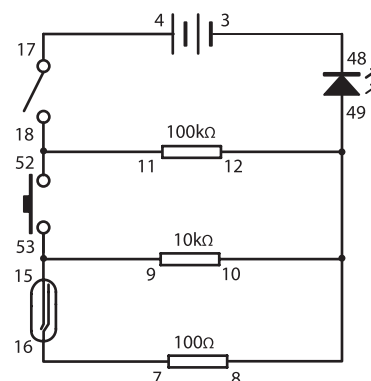
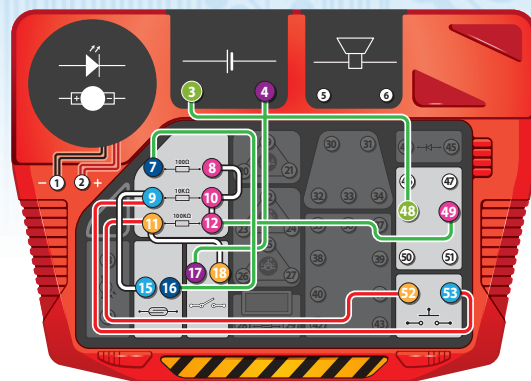
6

Rezistori in paralel



4-17, 18-11-52, 53-9-15, 16-7, 8-10-12-49, 48-3

Realizati conexiunile si puneti intrerupatorul in modul "pornit". LED-ul se aprinde slab. Apasati cel de-al doilea intrerupator iar LED-ul va devenii putin mai luminos. Curentul traverseaza doua cai diferite. Acum in timp ce apasati cel de-al doilea intrerupator folositi si intrerupatorul magnetic: curentul traverseaza acum trei cai diferite in acelasi timp, iar LED-ul este foarte luminos in ciuda celor trei tranzistori.

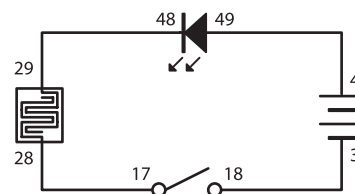
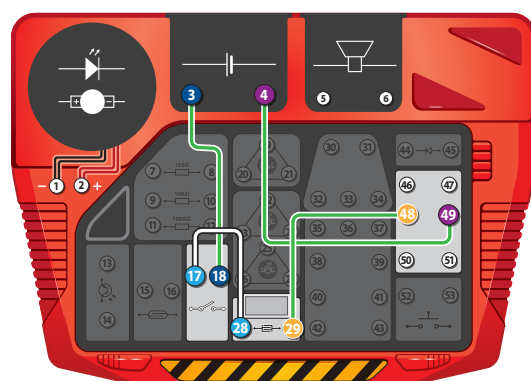
**7**

Intrerupatorul tactil



4-49, 48-29, 28-17, 18-3

Realizati conexiunile si puneti intrerupatorul in modul "pornit". Umeziti-va putin degetul si atingeti usor intrerupatorul tactil. LED-ul se aprinde slab, deoarece apa actioneaza ca un rezistor. Acum folositi apa sarata: LED-ul se aprinde mai luminos deoarece apa sarata este un conductor electric mai bun.



8

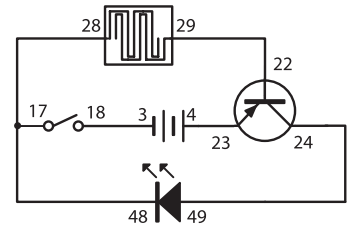
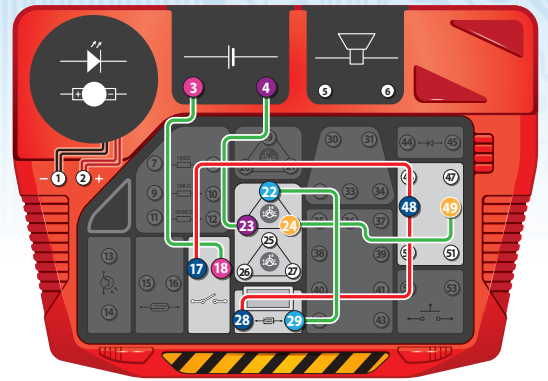
Tranzistorul PNP



4-23, 24-49, 22-29, 28-48-17, 18-3

Realizati conexiunile si puneti intrerupatorul in modul "pornit". Umeziti-va putin degetul si atingeti usor intrerupatorul tactil. LED-ul se aprinde puternic.

Degetul dvs este conectat direct la tranzistor, permitand curentului sa treaca de la emitor la colector si apoi in LED.



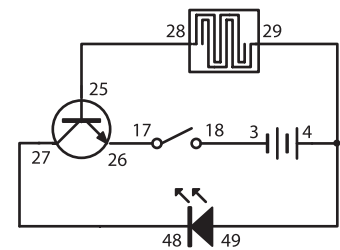
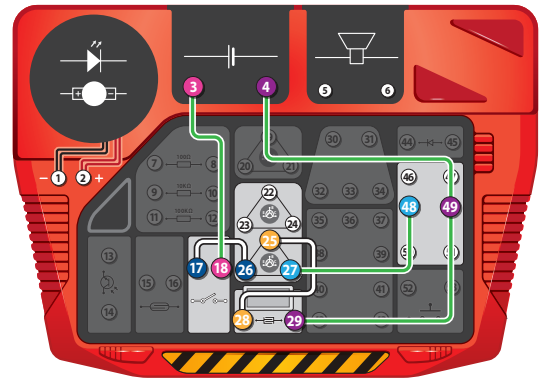
9

Tranzistorul NPN



4-49-29, 28-25, 27-48, 26-17, 18-3

Realizati conexiunile si puneti intrerupatorul in modul "pornit". Atingeti usor intrerupatorul tactil. Experimentul este asemanator, numai ca tranzistorul NPN inverseaza polaritatile.



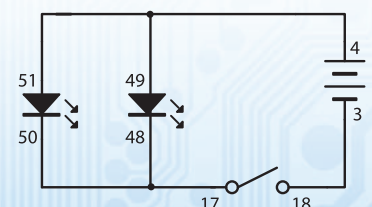
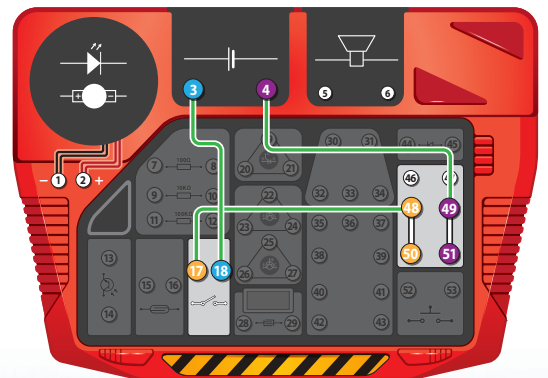
10

Doua LED-uri in paralel



4-49-51, 50-48-17, 18-3

Realizati conexiunile si puneti intrerupatorul in modul "pornit". Cele doua LED-uri se vor aprinde in acelasi timp.



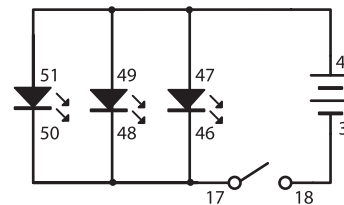
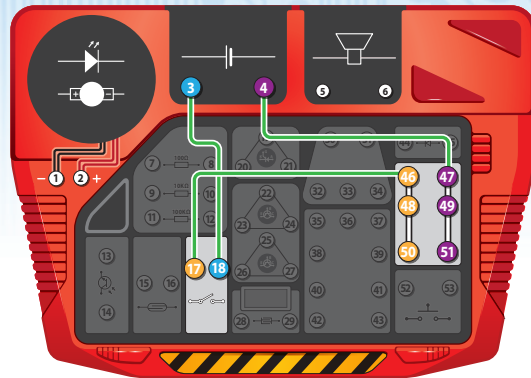
11

Trei LED-uri in paralel



4-47-49-51, 50-48-46-17, 18-3

Realizati conexiunile si puneti intrerupatorul in modul "pornit". Acum toate cele trei LED-uri se vor aprinde si se vor stinge in acelasi timp.



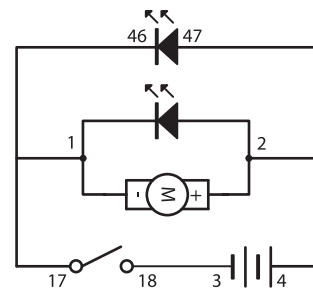
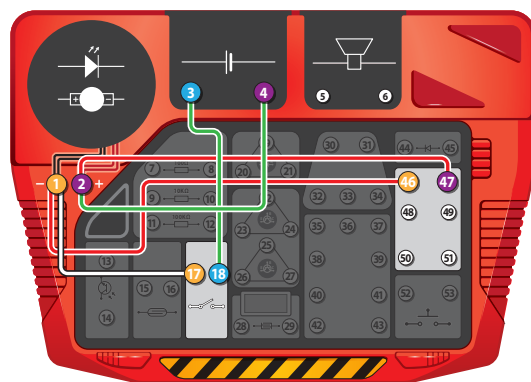
12

LED si lumina rotativa in acelasi timp



4-2-47, 46-1-17, 18-3

Realizati conexiunile si puneti intrerupatorul in modul "pornit". LED-ul si lumina rotativa vor porni si se vor opri in acelasi timp.



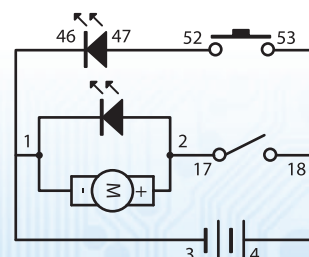
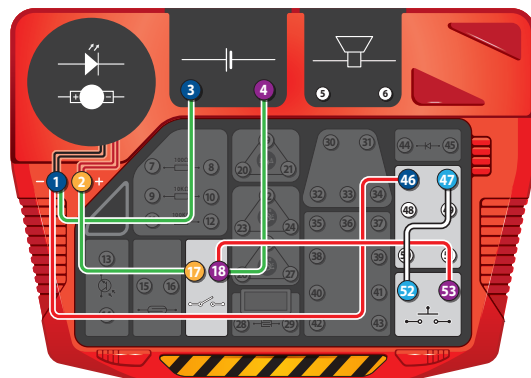
13

LED si lumina rotativa separata



4-18-53, 17-2, 52-47, 46-1-3

Realizati conexiunile indicate. Cand veti porni intrerupatorul, lumina rotativa va porni. Atingeti intrerupatorul tactil pentru a aprinde LED-ul. Componentele sunt separate si independente.



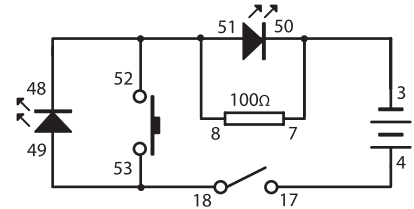
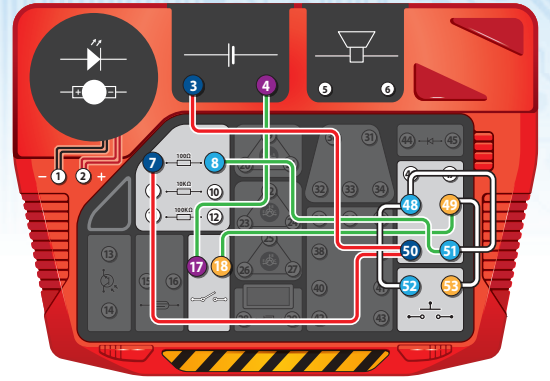
14

Asamblare LED simpla



4-17, 18-49-53, 52-48-51-8, 7-50-3

Realizati conexiunile si puneti intrerupatorul in modul "pornit". LED-ul mic se va aprinde, dar nu si cel mare. Atingeti intrerupatorul tactil: LED-ul mic se va stinge si se va aprinde cel mare.



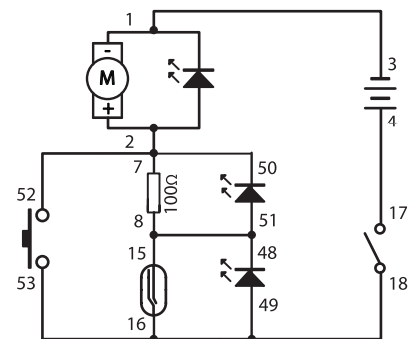
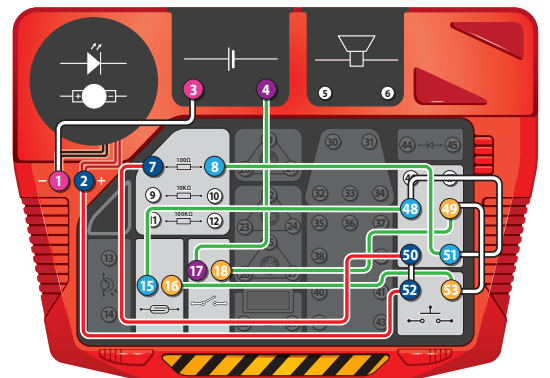
15

Lumina rotativa si mai multe LED-uri



4-17, 18-49-53-16, 15-48-51-8, 7-50-52-2, 1-3

Realizati conexiunile si puneti intrerupatorul in modul "pornit". LED-ul albastru se va aprinde, dar nu si cel mai mare. Pozitionati magnetul peste intrerupatorul magnetic: LED-ul cel mare se va aprinde. Apasati butonul; lumina rotativa va porni.



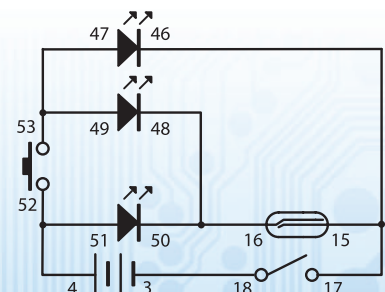
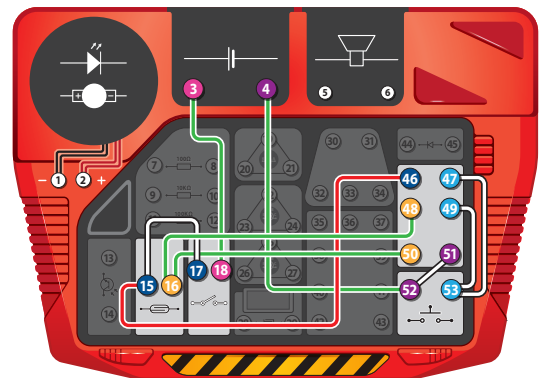
16

LED-uri combinate



4-52-51, 50-16-48, 49-53-47, 46-15-17, 18-3

Realizati conexiunile si puneti intrerupatorul in modul "pornit". Apasati cel de-al doilea intrerupator, apoi pozitionati magnetul peste intrerupatorul magnetic sau faceti aceste doua lucruri in acelasi timp pentru a explora toate combinatiile.



17

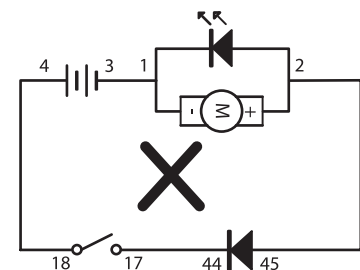
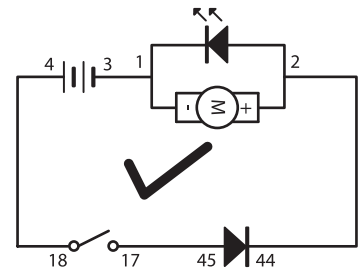
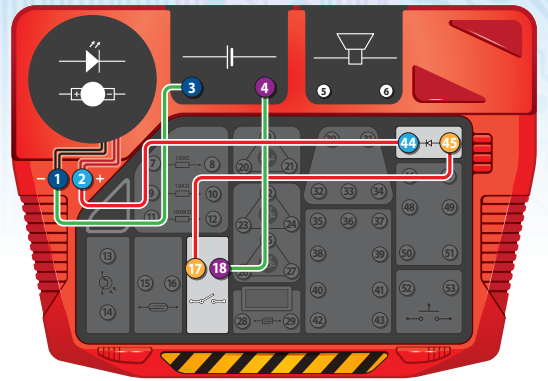
Dioda



4-18, 17-45, 44-2, 1-3

Realizati conexiunile si puneti intreruptorul in modul "pornit". Lumina rotativa se va aprinde. Inversati conexiunea - acum circuitul nu mai functioneaza.

Curentul poate traversa o dioda doar intr-o singura directie. Cealalta directie este blocata.



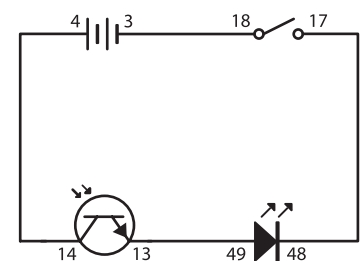
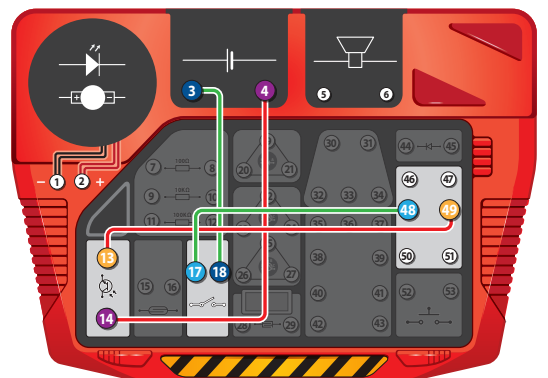
18

Senzorul de lumina



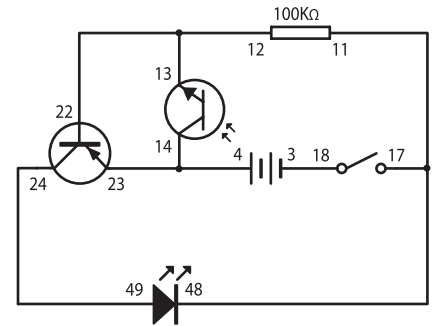
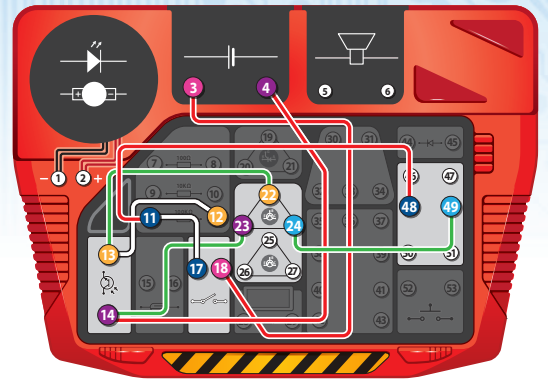
4-14, 13-49, 48-17, 18-3

Realizati conexiunile si puneti intreruptorul in modul "pornit". LED-ul se aprinde foarte slab. Acum indreptati o lumina catre unitate iar LED-ul se va aprinde mai puternic. Circuitul este sensibil la lumina - cu cat este mai multa lumina, cu atat va ajunge mai mult curent la LED.

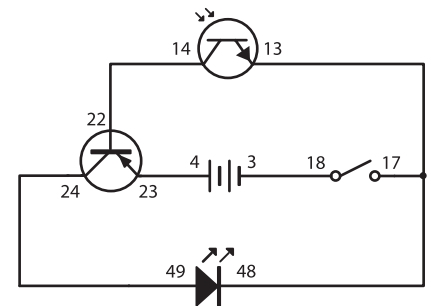
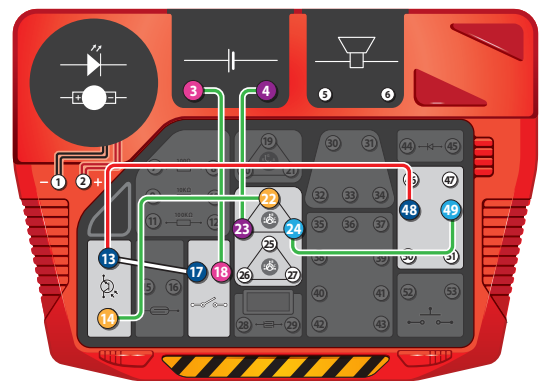


19**Intunericul si LED-ul****4-14-23, 22-13-12, 24-49, 48-11-17, 18-3**

Realizati conexiunile si puneti intrerupatorul in modul "pornit". LED-ul se aprinde normal. Acum intrati intr-o camera intunecata - LED-ul se va aprinde mai puternic. Tranzistorul si senzorul reactioneaza in functie de cat de intuneric este si regleaza circuitul curentului.

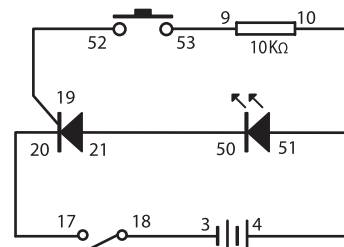
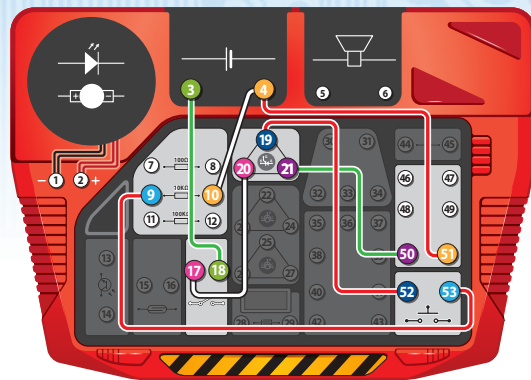
**20****Lumina si LED-ul****4-23, 22-14, 24-49, 48-13-17, 18-3**

Realizati conexiunile si puneti intrerupatorul in modul "pornit". LED-ul se aprinde normal. Acum intrati intr-o camera mai luminata - LED-ul se va aprinde mai puternic.

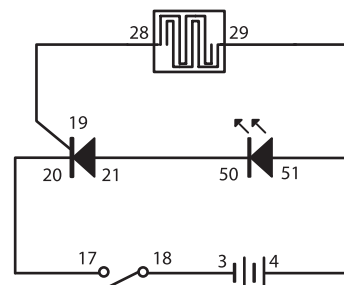
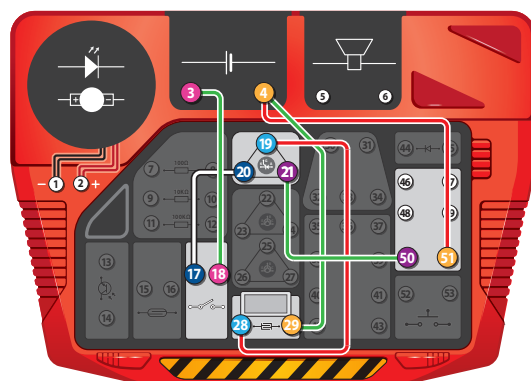


21**Tiristorul SCR***21-50, 51-4-10, 9-53, 52-19, 20-17, 18-3*

Realizati conexiunile si puneti intrerupatorul in modul "pornit". Nimic nu se intampla. Acum apasati si tineti apasat cel de-al doilea intrerupator. LED-ul se va aprinde, deoarece circuitul este acum inchis. Eliberati butonul - acum circuitul este din nou deschis, dar LED-ul a ramane aprins. Tiristorul controleaza circuitul curentului catre LED.

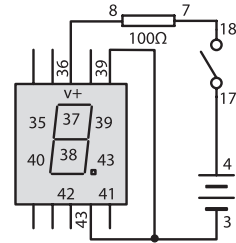
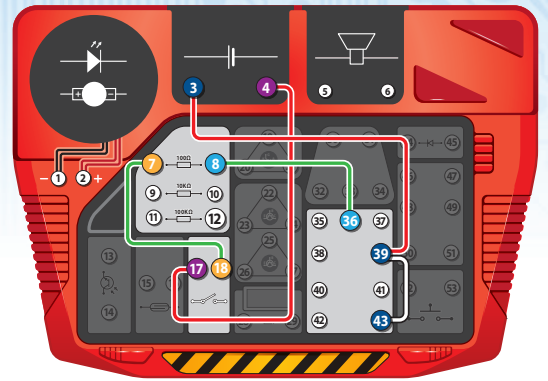
**22****Senzorul de umiditate***21-50, 51-4-29, 28-19, 20-17, 18-3*

Realizati conexiunile si puneti intrerupatorul in modul "pornit". Nimic nu se intampla. Acum puneti o picatura de apa pe intrerupatorul tactil. LED-ul se va aprinde. Stergeti cu un prosop picatura de apa. LED-ul ramane aprins.

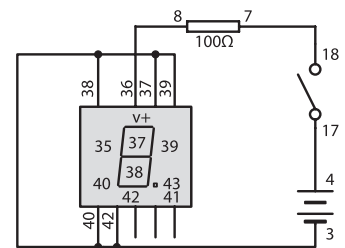
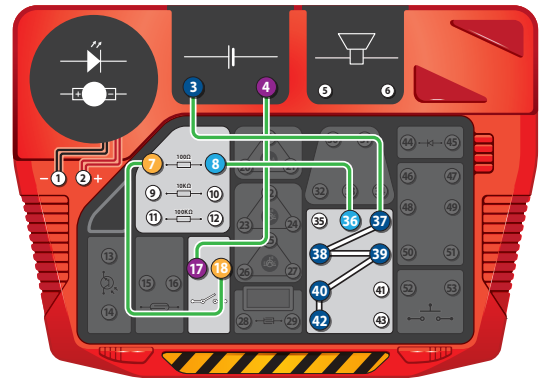


23**Cifra 1 afisata pe display****4-17, 18-7, 8-36, 3-39-43**

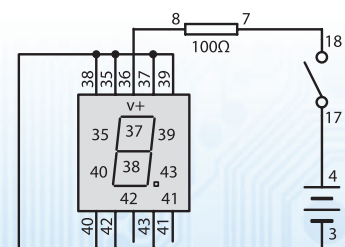
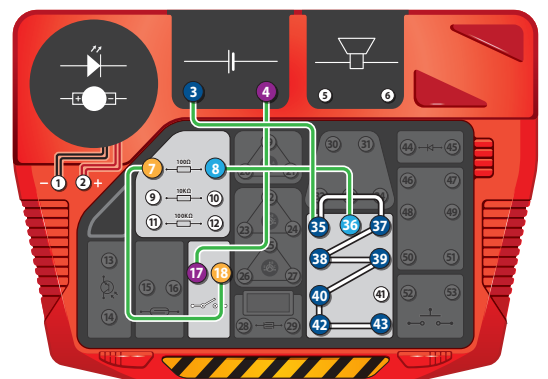
Realizati conexiunile si puneti intrerupatorul in modul "pornit". Cifra 1 va fi afisata pe display.

**24****Cifra 2 afisata pe display****4-17, 18-7, 8-36, 3-37-38-39-40-42**

Realizati conexiunile si puneti intrerupatorul in modul "pornit". Cifra 2 va fi afisata pe display.

**25****Cifra 8 afisata pe display****4-17, 18-7, 8-36, 3-35-37-38-39-40-42-43**

Realizati conexiunile si puneti intrerupatorul in modul "pornit". Cifra 8 va fi afisata pe display.



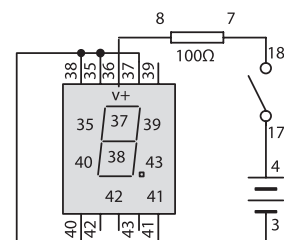
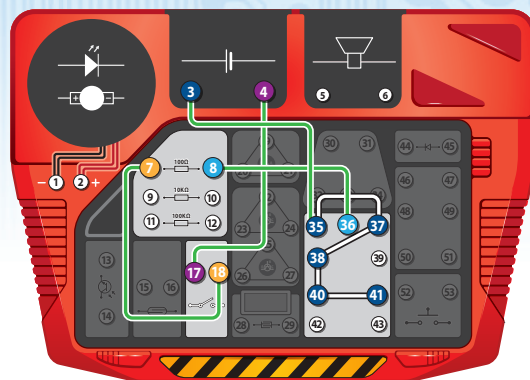
26

Litera F afisata pe display



4-17, 18-7, 8-36, 3-35-37-38-40-41

Realizati conexiunile si puneti intrerupatorul in modul "pornit". Litera F va fi afisata pe display.



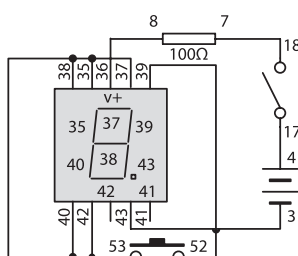
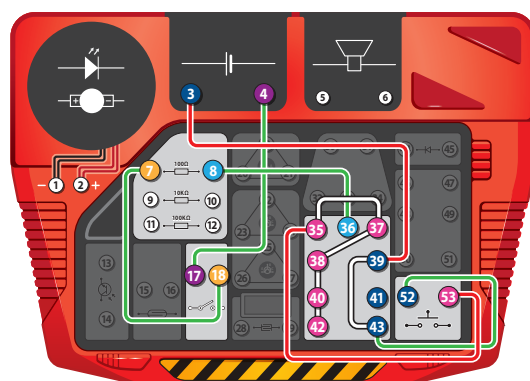
27

1 sau 8



4-17, 18-7, 8-36, 3-39-43-52, 53-35-37-38-40-42

Realizati conexiunile si puneti intrerupatorul in modul "pornit". Cifra 1 va fi afisata pe display. Cand veti apasa cel de-al doilea intrerupator, display-ul va afisa cifra 8.



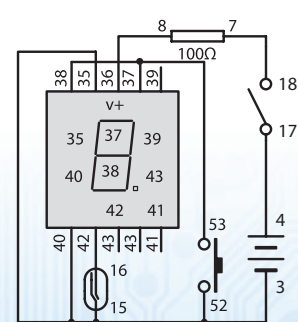
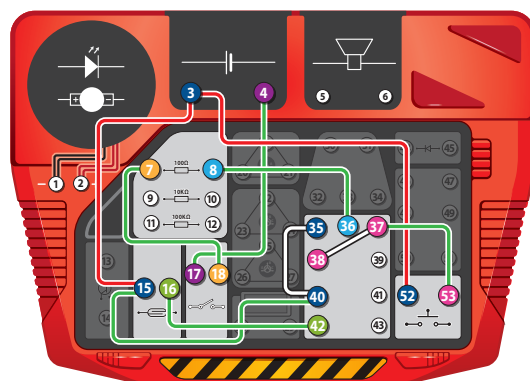
28

I, L, F sau E



4-17, 18-7, 8-36, 35-40-15-3-52, 53-37-38, 42-16

Realizati conexiunile si puneti intrerupatorul in modul "pornit". Litera I va fi afisata pe display. Activati intrerupatorul magnetic si display-ul va afisa L. Apasati butonul iar display-ul va afisa F. Activati ambele intrerupatoare in acelasi timp iar display-ul va afisa E.



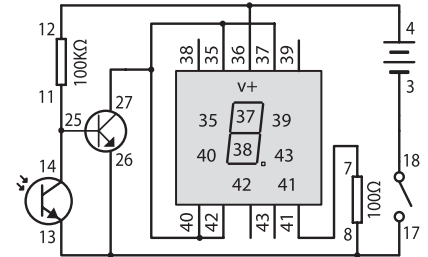
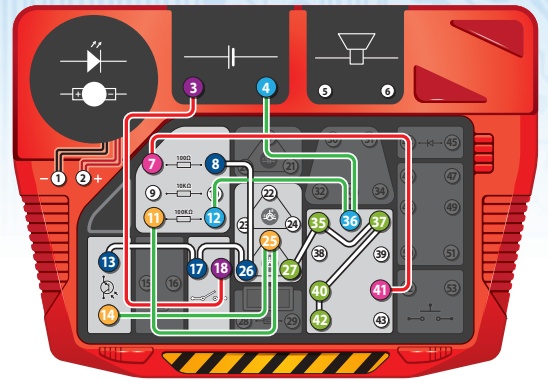
29

Ecranul si intinericul



3-18, 11-25-14, 4-36-12, 13-17-26-8, 7-41, 27-35-37-40-42

Realizati conexiunile si puneti intrerupatorul in modul "pornit". Ecranul va indica daca este destula lumina. Acoperiti senzorul si ecranul va afisa litera C - descoperiti senzorul iar ecranul se va opri.



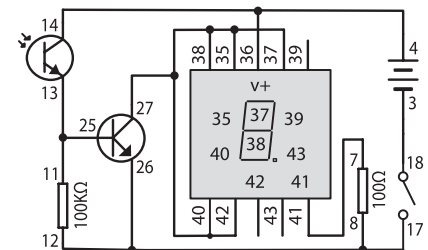
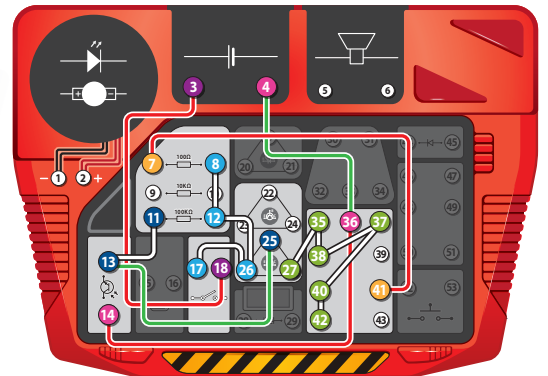
30

Ecranul si lumina



3-18, 41-7, 17-26-12-8, 11-13-25, 4-36-14, 27-35-38-37-40-42

Realizati conexiunile si puneti intrerupatorul in modul "pornit". Litera E va fi afisata. Acoperiti senzorul iar litera E va disparea.



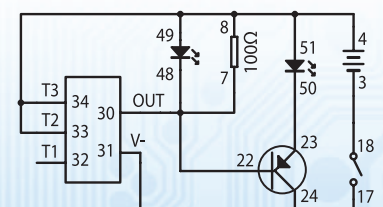
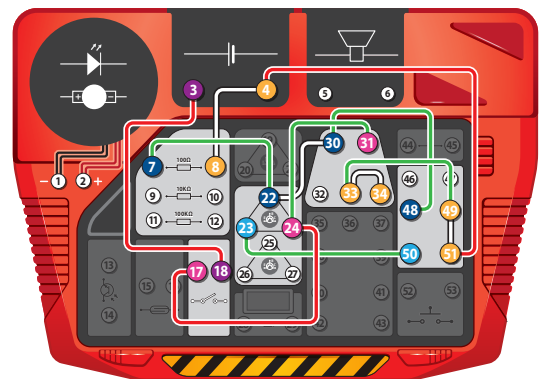
31

LED-ul intermitent



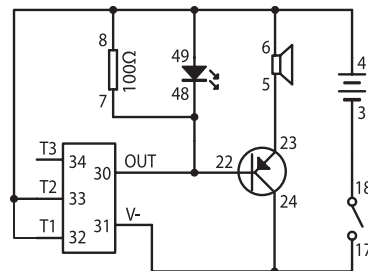
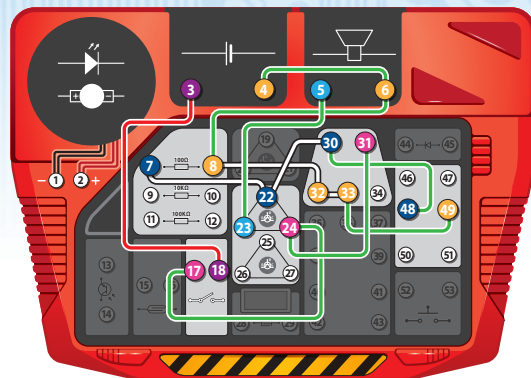
3-18, 8-4-51-49-33-34, 50-23, 7-22-30-48, 17-24-31

Realizati conexiunile si puneti intrerupatorul in modul "pornit". LED-urile se vor aprinde intermitent.

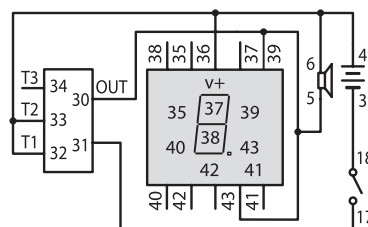
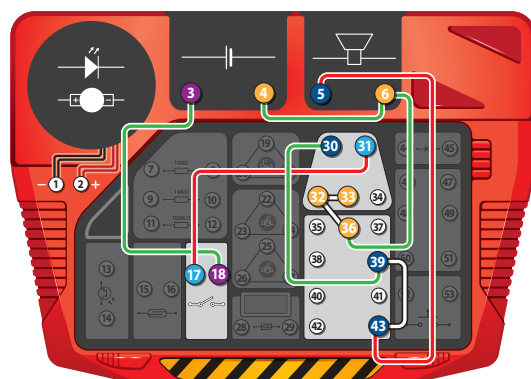


32**Latratul de caine si LED-ul intermitent***3-18, 4-6-8-32-33-49, 5-23, 7-22-30-48, 17-24-31*

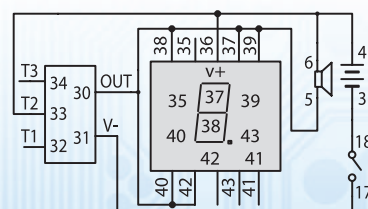
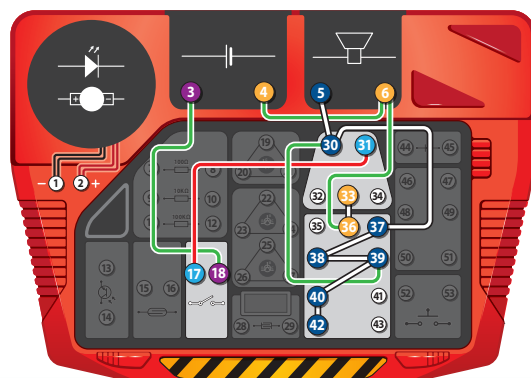
Realizati conexiunile si puneti intrerupatorul in modul "pornit". Veti auzi un latrat de caine iar LED-urile se vor aprinde in sincron cu sunetul.

**33****Latratul de caine si cifra 1***3-18, 4-6-36-32-33, 17-31, 30-39-43-5*

Realizati conexiunile si puneti intrerupatorul in modul "pornit". Veti auzi un caine latrand ecranul va afisa intermitent cifra 1.

**34****Cantatul cocosului si cifra 2***3-18, 4-6-36-33, 17-31, 5-30-37-38-39-40-42*

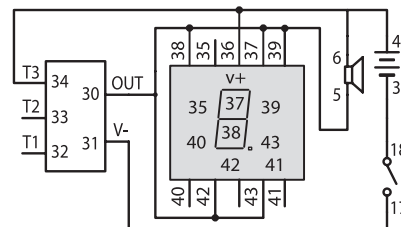
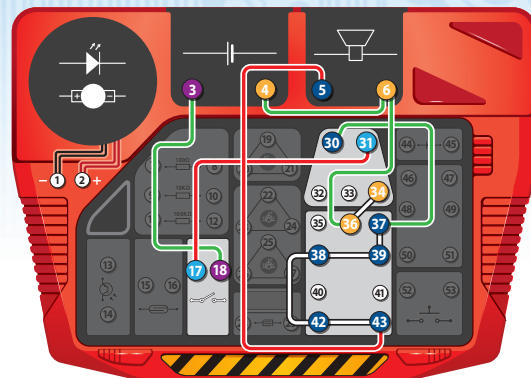
Realizati conexiunile si puneti intrerupatorul in modul "pornit". Veti auzi sunetul cocosului iar ecranul va afisa intermitent cifra 2.



35 Mieunatul pisicii si cifra 3

3-18, 4-6-36-34, 17-31, 30-37-39-38-42-43-5

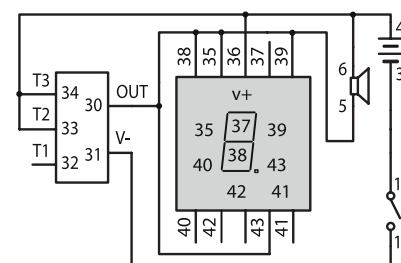
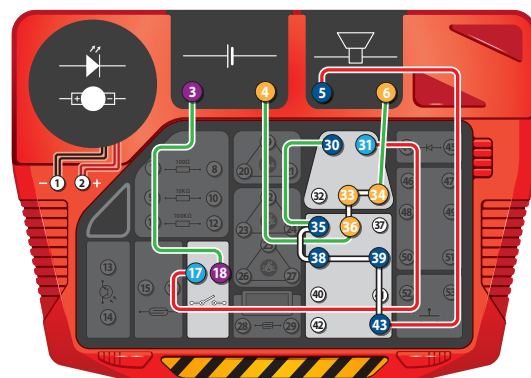
Realizati conexiunile si puneti intrerupatorul in modul "pornit". Veti auzi sunetul pisicii iar ecranul va afisa intermitent cifra 3.



36 Sunet de cal si cifra 4

3-18, 4-36-33-34-6, 17-31, 30-35-38-39-43-5

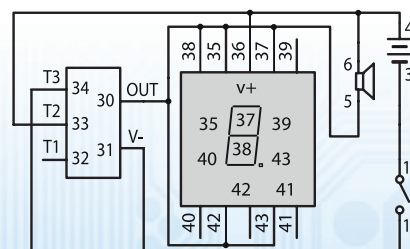
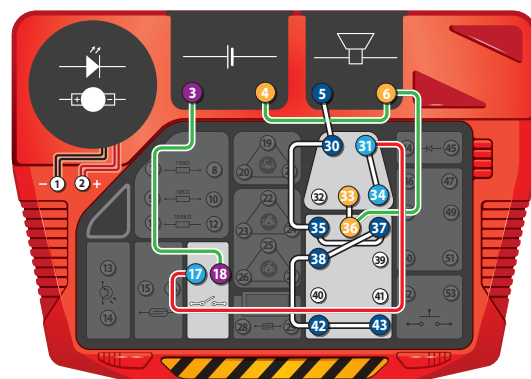
Realizati conexiunile si puneti intrerupatorul in modul "pornit". Veti auzi sunetul calului iar ecranul va afisa intermitent cifra 4.



37 Ciripitul pasarilor si cifra 5

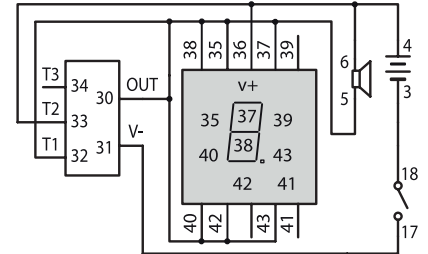
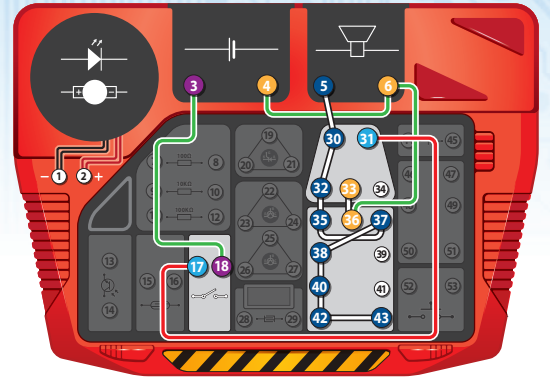
3-18, 4-6-36-33, 17-31-34, 5-30-35-37-38-42-43

Realizati conexiunile si puneti intrerupatorul in modul "pornit". Veti auzi sunetul pasarilor iar ecranul va afisa intermitent cifra 5.

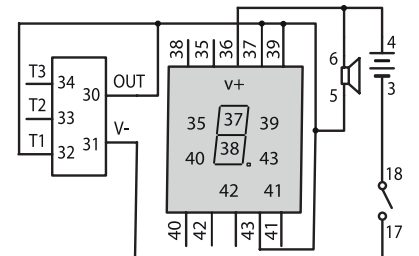
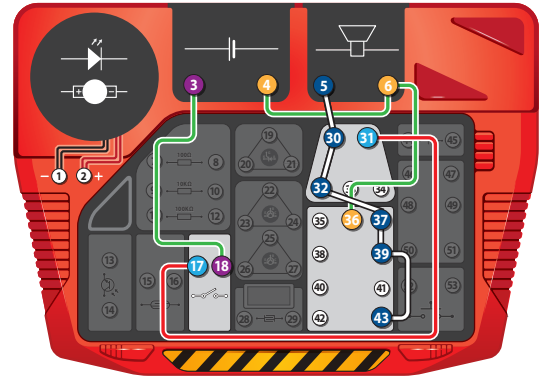


38**Sunet de rata si cifra 6****3-18, 4-6-36-33, 17-31, 5-30-32-35-37-38-40-42-43**

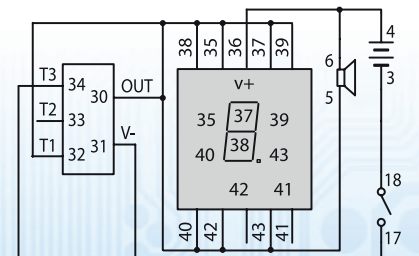
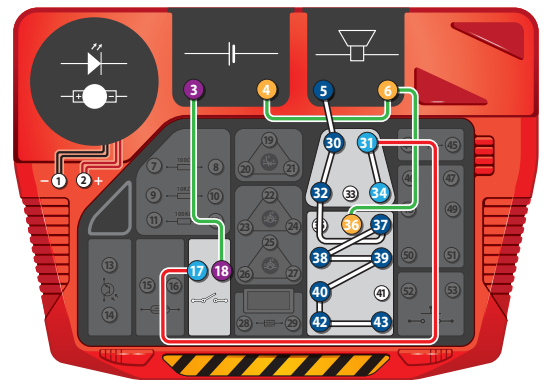
Realizati conexiunile si puneti intrerupatorul in modul "pornit". Veti auzi sunetul de rata iar ecranul va afisa intermitent cifra 6.

**39****Sunet de oaie si cifra 7****3-18, 4-6-36, 17-31, 5-30-32-37-39-43**

Realizati conexiunile si puneti intrerupatorul in modul "pornit". Veti auzi sunetul de oaie iar ecranul va afisa intermitent cifra 7.

**40****Sunet de cuc si cifra 8****3-18, 4-6-36, 17-31-34, 5-30-32-35-37-38-40-42-43**

Realizati conexiunile si puneti intrerupatorul in modul "pornit". Veti auzi sunetul de cuc iar ecranul va afisa intermitent cifra 8.



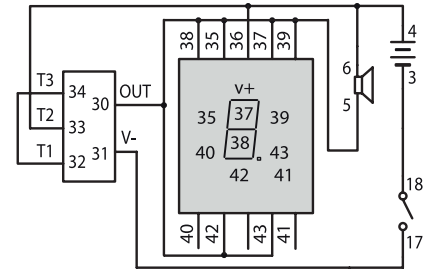
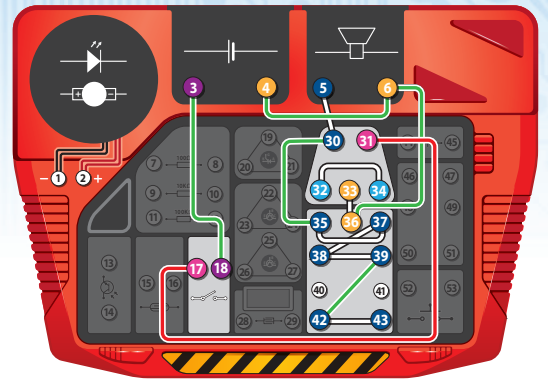
41

Sunet de broasca si cifra 9



3-18, 4-6-36-33, 32-34, 5-30-35-37-38-39-42-43, 17-31

Realizati conexiunile si puneti intrerupatorul in modul "pornit". Veti auzi sunetul de broasca iar ecranul va afisa intermitent cifra 9.



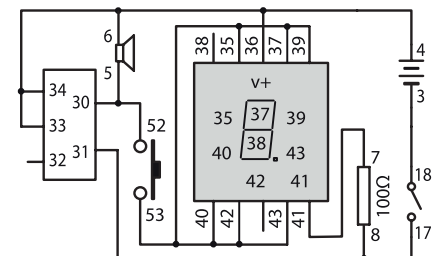
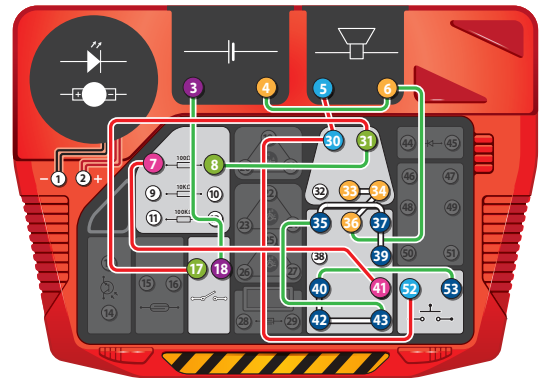
42

Sunet de cal



3-18, 4-6-36-34-33, 5-30-52, 53-40-42-43-35-37-39, 41-17, 8-31-17

Realizati conexiunile si puneti intrerupatorul in modul "pornit". Veti auzi sunetul de cal. Apasati butonul pentru a afisa cifra 0 pe ecran.



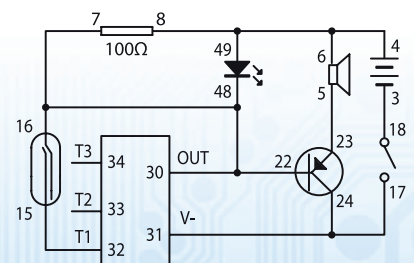
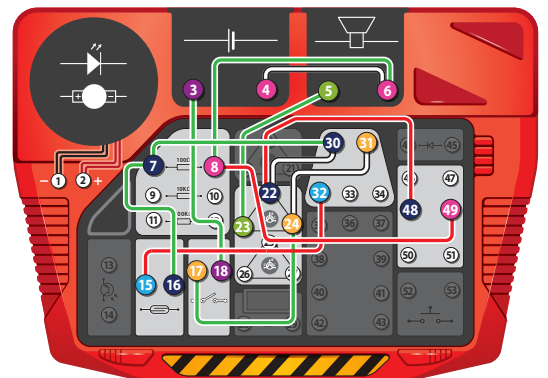
43

Sunet de oaie - activat magnetic



3-18, 17-24-31, 32-15, 16-7-30-22-48, 49-8-6-4, 5-23

Realizati conexiunile si puneti intrerupatorul in modul "pornit". Activati intrerupatorul magnetic. Veti auzi sunetul de oaie iar LED-ul se va aprinde.

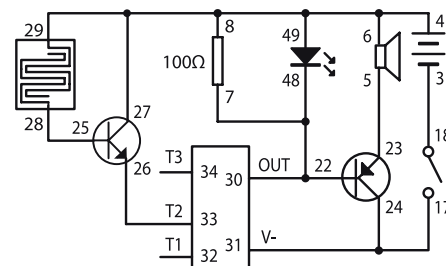
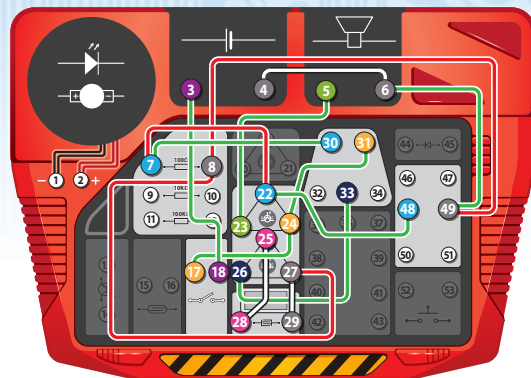


44 Cantatul cocosului - Intrerupator tactil



3-18, 17-24-31, 30-7-22-48, 33-26, 28-25, 23-5,
29-27-8-49-6-4

Realizati conexiunile si puneti intrerupatorul in modul "pornit". Atingeti intrerupatorul tactil. Vetii auzi sunetul cocosului iar LED-ul se va aprinde.

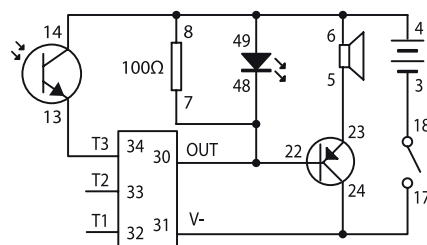
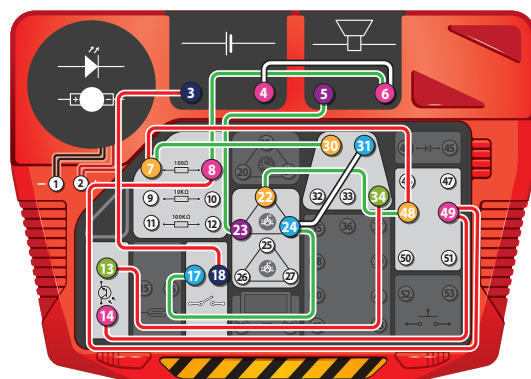


45 Mieunatul pisicii - in lumina



5-23, 22-48-7-30, 31-24-17, 18-3, 4-6-8-49-14, 13-34

Realizati conexiunile si puneti intrerupatorul in modul "pornit". Daca sunteti intr-o incapere bine luminata veti auzi mieunatul pisicii iar LED-ul se va aprinde.

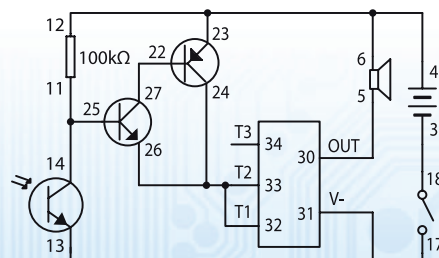
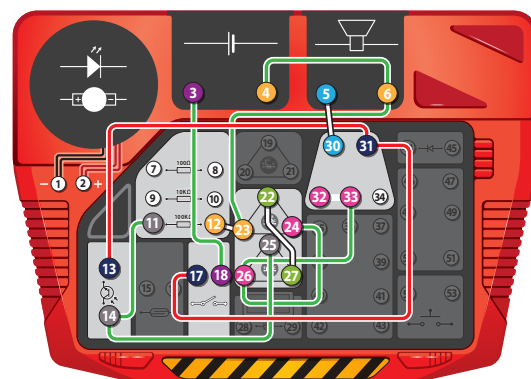


46 Latratul cainelui - in intuneric



3-18, 4-6-23-12, 5-30, 17-31-13, 24-26-33-32,
22-27, 11-14-25

Realizati conexiunile si puneti intrerupatorul in modul "pornit". Daca este intuneric, veti auzi un caine latrand iar LED-ul se va aprinde.



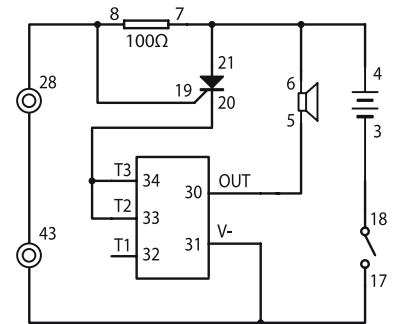
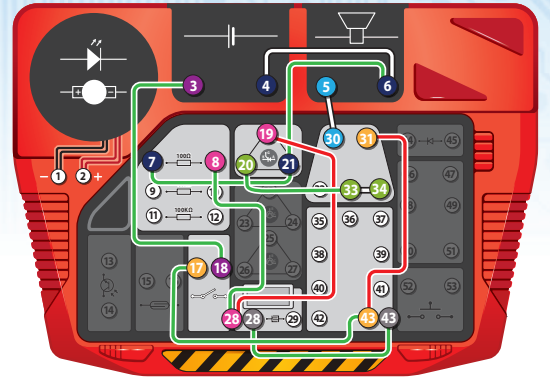
47

Alarma de securitate



3-18, 17-43-31, 30-5, 4-6-21-7, 8-28-19, 20-30-34, 28-43

Realizati conexiunile si puneti intrerupatorul in modul "pornit". Nu se intampla nimic. Cand veti conecta un fir intre 28 si 43, difuzorul va produce un zgomot de cal.



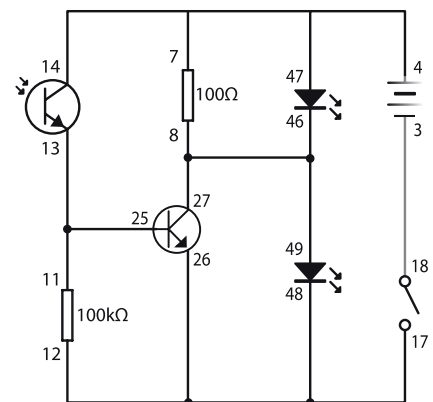
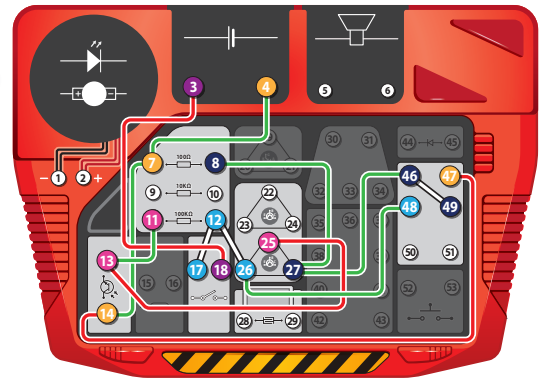
48

Indicatorul de lumina



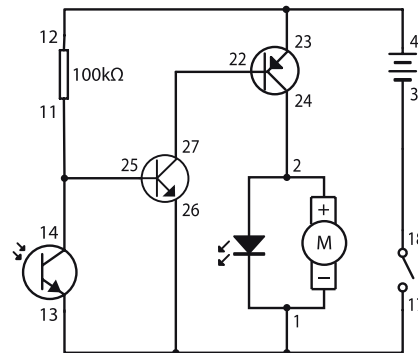
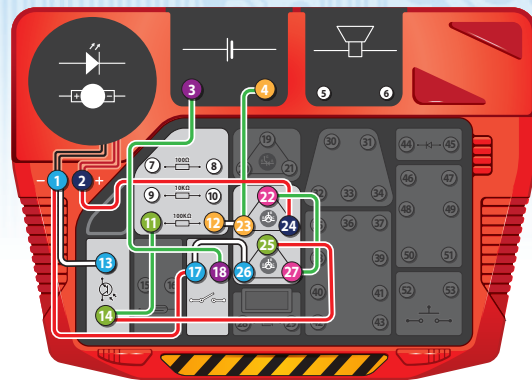
3-18, 4-7-14-47, 17-12-26-48, 8-27-46-49, 11-13-25

Realizati conexiunile si puneti intrerupatorul in modul "pornit". In lumina, se va aprinde LED-ul multicolor dar nu si cel albastru. In intuneric va fi invers.

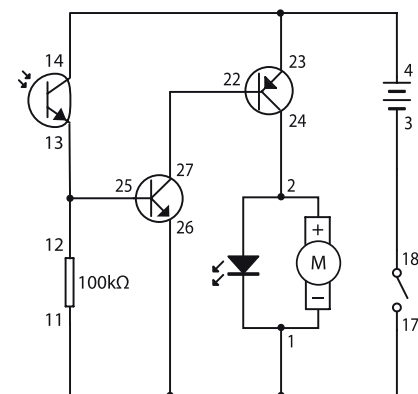
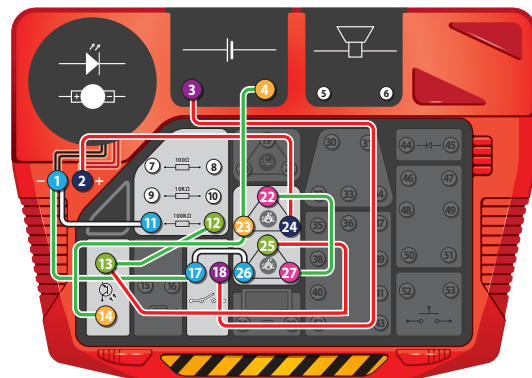


49**Lumina rotativa in intuneric***3-18, 4-23-12, 26-17-1-13, 24-2, 22-27, 11-14-25*

Realizati conexiunile si puneti intrerupatorul in modul "pornit". Intrati intr-o camera intunecata. Lumina rotativa va porni cand este intuneric.

**50****Lumina rotativa in lumina***3-18, 4-23-14, 26-17-1-11, 24-2, 22-27, 12-13-25*

Realizati conexiunile si puneti intrerupatorul in modul "pornit". Intrati intr-o camera bine iluminata. Lumina rotativa va porni cand este lumina.





AVERTISMENTE:

Recomandat copiilor mai mari de 8 ani.

Nu este potrivit pentru copiii sub 36 de luni,
datorita partilor mici continute care pot fi
inghitite! Pericol de sufocare!

Este necesara supravegherea adulților.

Pastrati ambalajul produsului pentru consultari
ulterioare!

Culorile și conținutul pot varia ușor de la un
set la altul.

Necesita doua baterii LR06-AA - acestea nu sunt incluse.



Produs si distribuit de:

BUKI France

22 rue du 33ème Mobiles - 72000 Le Mans - FRANCE

Tél: +33 1 46 65 09 92

E-mail : daniellevy@bezeqint.net

www.bukifrance.com

