



Children stroller

Grav

Instruction Manual
QPS001



QPlay

Company: QPLAY GMBH
Address: Neumarkt 39, 50667 Köln, Germany
Website: www.qplaykids.com.

Contact your local distributor

**IMPORTANT - READ CAREFULLY AND
KEEP FOR FUTURE REFERENCE**



Installing Video

Safety and Warnings

WARNING

Please read the instructions carefully and keep for future reference. It will tell you the correct operation methods and installation procedures to avoid injury to your child or damage to the product due to incorrect operation methods. For your child's safety, you must pay attention to the following warnings:

General Security Warning

Caution: Children should use this product under the parental supervision.

Danger: Keep all small parts and packaging materials for this product away from babies and children, otherwise they may pose a choking hazard.

Danger: Lack of attachment may cause a risk of tipping.

WARNING

- This product should be assembled by an adult, and adjustment must be carried out by the child's caregiver.
- Ensure that all the locking devices are engaged before use.
- Children must use seat belts properly when sitting.
- Caregivers are not allowed to leave while children are sitting.
- Any load attached to the handle and/or on the back of the backrest and/or on the sides of the vehicle will affect the stability of the vehicle.
- Keep children away from moving parts when adjusting strollers.
- Do not allow children to stand or play on pedal.
- When children are in the stroller, do not move the stroller up and down stairs or fold the stroller.
- The use of baby strollers on escalators is prohibited.
- It is prohibited to use any accessories not provided by the manufacturer.
- The maximum baby weight capacity of the product is 22 kg, and it shall not be overloaded.
- The maximum weight capacity of the basket is 2 kg/4 lbs, which shall not be overloaded.
- Applicable age range: 0-48 months old.
- When used by children under 6 months of age, please adjust the backrest angle to more than 150°. When the angle between the back and the bottom cushion is less than or equal to 150°, it is not suitable for children under 6 months of age.
- Do not let the child play with this product.
- This product is not suitable for running or skating.
- The parking device shall be engaged when placing and removing the children.
- This product is only suitable for one child to use.
- Accessories which are not approved by the manufacturer shall not be used.
- Only replacement parts supplied or recommended by the manufacturer/distributor shall be used.
- Never leave the child unattended.
- It is recommend the use of the most reclined position for new born babies.
- To avoid injury ensure that the child is kept away when unfolding and folding this product.
- Check that the pram body or seat unit or car seat attachment devices are correctly engaged before use.
- Always use the restraint system.

Grav

New Pushchair by QPlay

- **Age adaptation**
0-48m
- **Net weight**
7.5kg
- **Load limit**
22kg
- **Product size**
835X500X1070mm
- **Package size**
450*225*570mm
- **Folding size**
540X340X770mm

Parts list



Assembly

⚠️ WARNING

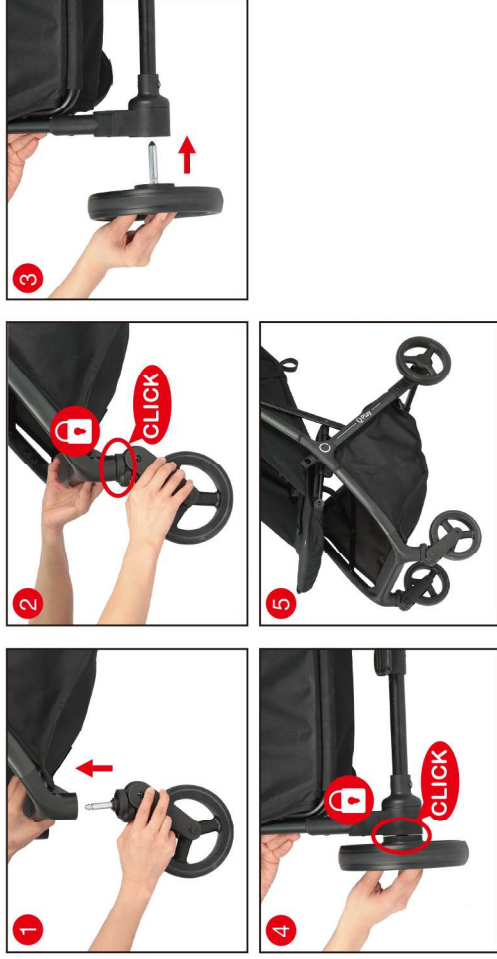
Adults assembly required. Choking Hazard to children under the age of 3 years - contains small parts prior to assembly. Keep all small parts out of reach of children at all times.

- Assembled only by adults.
- Remove all packaging, separate and count all parts and hardware.
- Read through each step carefully and follow the proper order.
- We recommend that, where possible, all items are assembled near the area in which they will be placed in use, to avoid moving the product unnecessarily once assembled.
- Ensure a secure surface during installation, and always place the product on a flat, steady and stable surface.

Unfolding the Frame



Installing Front Wheels & Rear Wheels



Operation

⚠️ WARNING: The Handrail and Child Restraint Harness should always be used for children who are sitting in the seat.

Wheels Brake



Pedal Adjustment



Installing Handrail



Backrest Adjustment



Installing Canopy



Fold the Frame



Care & Maintenance

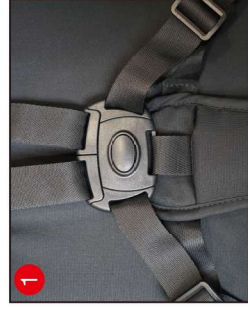
- Before use, check whether the components are properly installed and securely connected.
- Be careful not to let the child climb out of the guardrail or stand on the seat.
- Do not use the car in uneven fields, near the stove and other dangerous areas.
- Avoid use or storage in wet, cold or high temperature environments, and keep away from fire or strong heat sources.
- In order to ensure that your child is protected from accidental injury, please check and maintain the product frequently.
- The cloth cover should not be soaked and washed. When cleaning the cloth cover, please brush the stain directly with a brush and other cleaning equipment. Please wash with household soap or neutral detergent.
- Periodically check whether screws are loose, parts are damaged or stitches are broken, and replace the damaged ones if necessary.
- When disassembling, please follow the instructions carefully to avoid unnecessary damage.

Remove for Future Use



Safety harness adjustment

Open safety harness



Insert safety harness



Shoulder strap adjustment

